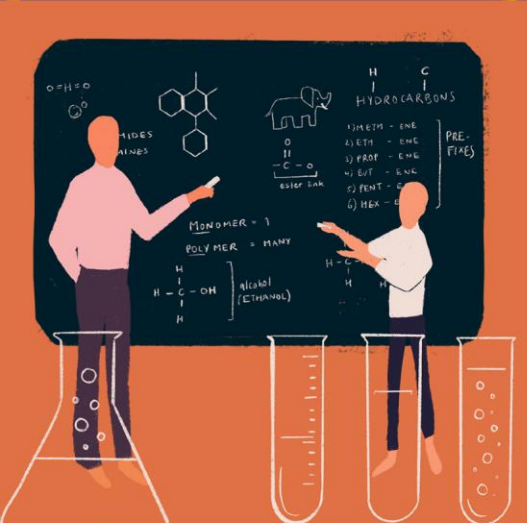


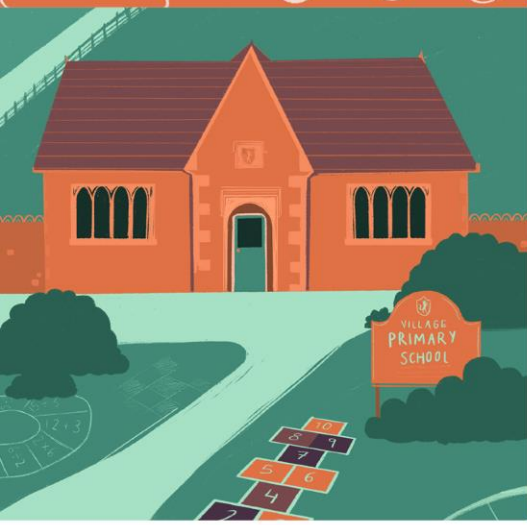


SOUTH WEST

Institute for Teaching



**Membership**  
Join us,  
be a part of our  
SWIFT community





SWIFT is proud to play a leading role in the design and delivery of professional development for schools in Devon, Plymouth and Torbay.

SWIFT Membership enables schools to be part of a unique, local education community, driven by school leaders and teachers and built around a strong set of shared values.

## Benefits of SWIFT membership

Programmes	Unlimited access to	For members
<b>Professional Communities</b>	25 Subject and Leadership termly Professional Communities	Free
<b>Secondary School Performance Analysis</b>	Share your school performance data and have access to early analysis and benchmarking (whole school and subject), ahead of national data releases	Free
<b>Primary Subject Leader Briefings</b>	Termly briefing for Subject Leaders in Early Years, English, Science and Maths.	Free
<b>Leadership Study Visits</b>	In partnership with Leading Schools South West (our NPQ Partner), we are running termly Study Visits to high-performing schools across England	Discount
<b>Moderation and Exam Series</b>	Includes moderation for Nursery, Early Years, Writing (KS1 and 2)   AQA Feedback on the Exams sessions for GCSE and A Level	Discount
<b>Staff Meeting Series</b>	Whole School online series, topics include Writing & Adaptive Teaching in connection with your SIP and Whole School Behaviour Programme	Discount
<b>Coaching</b>	Includes an Advanced Coaching Programme for School Leaders	Discount
<b>Teaching Assistant Support Programme</b>	Sessions include an introduction to the role, supporting pupils with SEND & promoting positive interactions in the primary classroom	Discount
<b>Leadership Forums</b>	Inspiring keynote speakers covering current leadership topics and phase specialist speakers covering, Early Years, Primary, Secondary, Special/AP   Termly	Free
<b>Curriculum Forums</b>	Inspiring curriculum specialist speakers on topics such as curriculum design, content, equality and leadership	Free
<b>Compliance</b>	Includes Safeguarding, First Aid and PIPS	Discount
<b>Conferences</b>	Includes Summer Conference with leading national and regional speakers	Discount
<b>Updates</b>	Fortnightly Events newsletter and Monthly Update newsletter	Free

If you would like to become a member please use the registration link [HERE](#)

# The best of national and local expertise

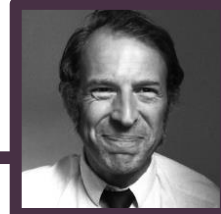
Here are some of the people who will be delivering next year...



## Paul Dix and Tara Elie | Whole School Behaviour programme

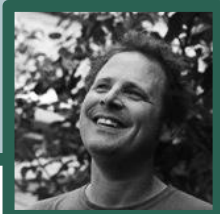
Paul is an award-winning Behaviour Specialist, Writer, Speaker, Advisor and Education Reformer. He has developed a strong reputation for delivering exceptional training with remarkable outcomes.

Tara is an EMCC coach, a qualified psychologist, a senior lecturer in education and a behaviour specialist. She is renowned for her engaging training delivery, both face-to-face and virtually.



## Marc Rowland | Leading Effective Disadvantage Provision for Primary School Pupils & Leading Effective Disadvantage Provision for Secondary School Pupils

Marc is the adviser for improving outcomes for disadvantaged learners for a large cross-phase Multi Academy Trust. He also works with the EEF's national Research School Network on a range of programmes, and with the Department of Education on addressing educational disadvantage in schools.



## Philip Davis | Write Inspired Primary Writing: Staff meeting series

Philip is the creator of Write Inspired. He started his career as a teacher for children with emotional and behavioural difficulties and moved on to mainstream teaching where he developed his unique pedagogy to develop and inspire a more creative approach to all teaching and learning. He also works as a research associate on the importance of creativity in the classroom at Kings college London.



## Lucy Herring | TA Training: Supporting Pupils with SEND', 'TA's New to the Role and Promoting Positive Interactions

Lucy is an experienced educator within the Primary and Early Years sector. She currently works in an Advisory role promoting the inclusion and support of vulnerable learners. She has a strong research led background and a passion to support all children in education to flourish and thrive.



## What our members say



*“Working with SWIFT has given us access to partnerships both regionally and nationally, which as an individual school or a small Trust would have been much harder to realise. Our partnership keeps us up-to-date with the latest developments in teaching and learning and also policy direction. It helps us to feel one step ahead and the networks and opportunities that it has created for our senior leaders and teachers have been invaluable.”*

**Stewart Biddles, CEO of Riviera Education Trust**



*“As a leader, I have found my membership of SWIFT extremely valuable, across several schools and many situations. It has offered wide ranging and far-reaching benefits in many fields: personal, professional development, leadership think tanks, quality, school-wide CPD opportunities and peer-to-peer support to name but a few.”*

**Christopher Tribble, Headteacher of Honiton Primary School**



*“Braunton Academy has found the SWIFT Membership highly effective in training for Senior Leaders enhancing our strategic leadership of the curriculum and inclusion. Middle leaders find the curriculum groups effective CPD for the development of their curriculum areas as well a powerful tool for networking.”*

**Fay Bowler, Principal, Braunton Academy**



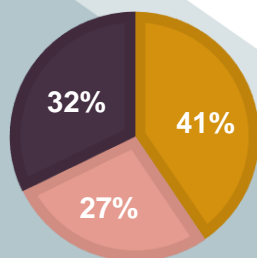
# SWIFT membership – our impact in numbers

## CPD participation

2023-2024 academic year: 171 CPD sessions with over 2500 participants.

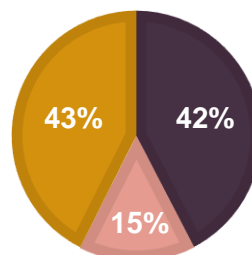
### CPD SESSIONS

■ Primary ■ Secondary ■ Cross-phase



### PARTICIPANTS

■ Primary ■ Secondary ■ Cross-phase

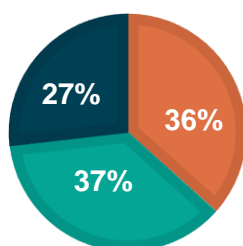


## Professional Communities

2023-2024 academic year: 25 Professional Communities with over 750 participants.

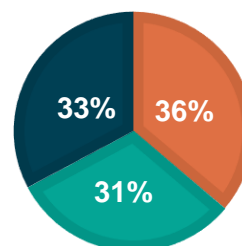
### PROFESSIONAL COMMUNITY SESSIONS

■ Primary ■ Secondary ■ Cross-phase



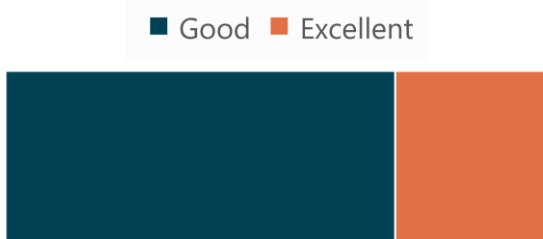
### PROFESSIONAL COMMUNITY PARTICIPANTS

■ Primary ■ Secondary ■ Cross-phase



# Course evaluations and feedback

How would you rate the overall quality of the course



*“So helpful in giving subject leads the confidence to drive forwards the things that are going to have the most significant impact on student outcomes.”*

*“Course design and delivery were pitched perfectly.”*

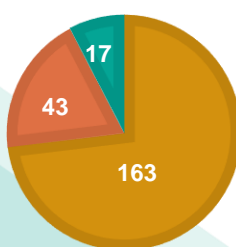
*“Good to reflect on practice and to be challenged about what we do. Linking theory to practice makes it directly relevant.”*

*“The trainer and the delivery was brilliant, I just wanted to learn more. Looking forward to the second part!”*

## Membership

NUMBER OF MEMBER SCHOOLS BY PHASE 2023-2024

■ Primary ■ Secondary ■ Other



## Membership 2024-2025

Membership Fees are based on the number of pupils in a school. We have worked hard to keep costs down and fees remain unchanged for the fourth consecutive year, despite rising costs for presenters and venues. Federations and MATs can apply on behalf of their schools. This can reduce administration time and, where combined numbers of pupils exceed 2001, provide access to discounted charging tiers (see table below).

Charging Tiers	Based on pupil numbers	Charge per pupil	Example
1	1-2000	£2.00	1000 pupils = £2000
2	2001-4000	£1.75	3000 pupils = £5750 (£4000 + £1750)
3	4001-7000	£1.50	7000 pupils = £10,500 (Max charge)

More information on the SWIFT website [HERE](#)

If you would like to become a member please use the registration link [HERE](#)

If you would like to become a member please use the following registration link [HERE](#)

The registration takes a maximum of five minutes to complete.

You will be asked to provide numbers of pupil on roll in each Key Stage as part of the registration.

## Contact us



For further information about SWIFT  
Membership please contact us:  
[info@sw-ift.org.uk](mailto:info@sw-ift.org.uk)



[www.sw-ift.org.uk](http://www.sw-ift.org.uk)